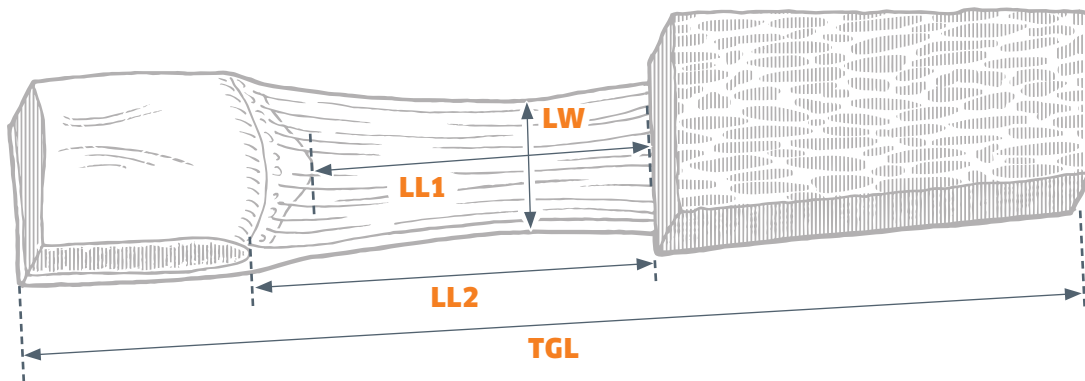


# ALLOGRAFT BONE TENDON BONE MEASUREMENTS

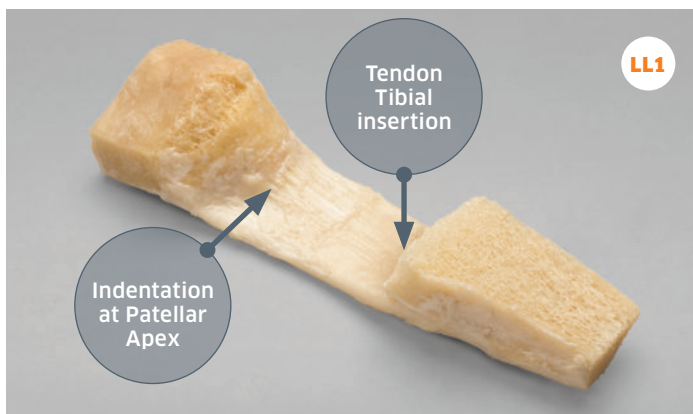


EVERY BONE  
TENDON PATELLA  
BONE ALLOGRAFT  
PRODUCED AT  
ALLOSOURCE IS  
METICULOUSLY  
MEASURED FOR  
PROPER TENDON  
TO PATIENT SIZING

The **Total Graft Length (TGL)** is measured from end to end of the allograft.

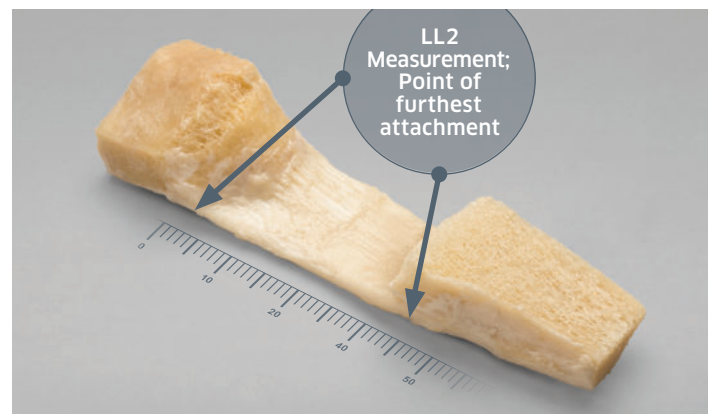
Two separate ligament length measurements are taken; **Ligament Length 1 (LL1)**, the length of the ligament from the Tibial insertion to the apex of the Patella bone.

**Ligament Length 2 (LL2)**, the length of the ligament from the Tibial insertion to the furthest attachment of the ligament to the Patella bone. The ligament width, Tibial bone block length and width are also measured to aid in procedure planning and allograft use.



## LL1 MEASUREMENT

Measurement indicated by space between the tendon tibial insertion and the Indentation at the patellar apex. Ligament is held taught while on sterile field.



## LL2 MEASUREMENT

Measurement indicated by space between point of furthest attachment.

**AlloConnex**<sup>TM</sup>



For more information  
or to place an order call 800.557.3587

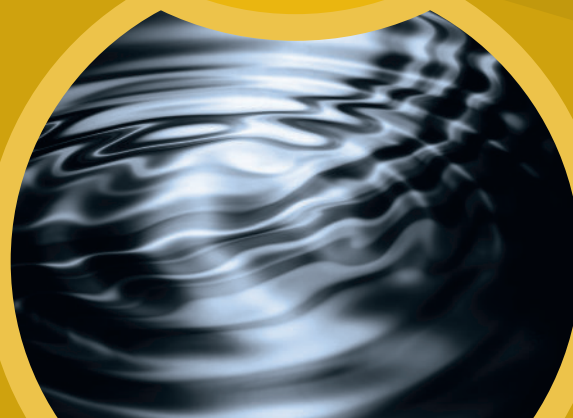
AlloSource's AlloTrue™ technology is a unique, patented cleaning process designed to penetrate deep within donor tissue while still maintaining tissue integrity.

#### TECHNOLOGY

AlloTrue utilizes a combination of treatments of antibiotics, alcohol, peroxide (bone allografts only) and multiple water rinses. The deep penetrating cleansing, with minimal tissue manipulation, results in microbial inactivation.<sup>1</sup>

#### PROCESS

The AlloTrue system contains motion for complete exposure of the allograft tissues to the cleansing reagents and agitation to facilitate the removal of blood and lipids.



<sup>1</sup>. Data on file at AlloSource.

AlloSource®, a non-profit organization, offers more than 200 types of precise bone, skin, soft-tissue and custom-machined allografts for use in an array of life-saving and life-enhancing medical procedures. Committed to honoring the gift of donation, the company delivers unparalleled expertise and customer service to its network of surgeons, partners and the country's most reputable organ procurement organizations.

AlloSource is a leader in live cell tissue processing including fresh skin allografts for severe burns, and fresh cartilage tissue for joint repair.

6278 S Troy Cir  
Centennial, CO 80111

MAIN 720. 873. 0213  
FAX 720. 873. 0212

[allosource.org](http://allosource.org)

